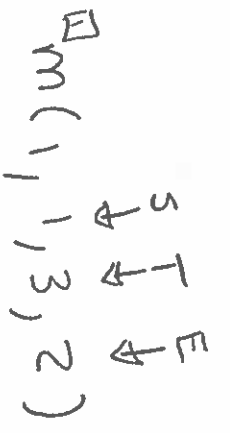


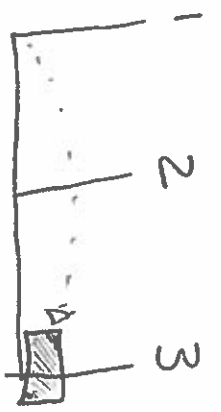
NO DISK



START



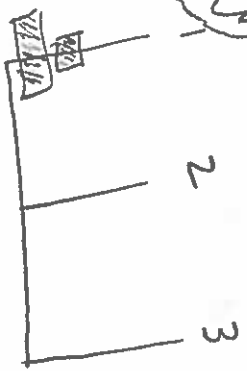
FINISH



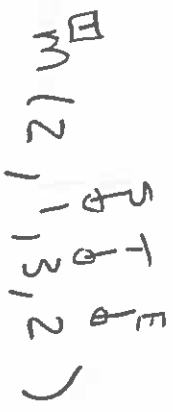
INSIDE A
FIRST CMC
TO MOVE



2 DISK



START



FINISH



INSIDE A
FIRST CMC
TO MOVE



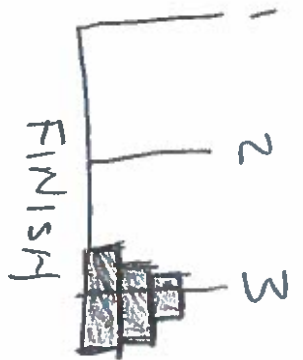
INSIDE A
SECOND CMC
TO MOVE



3 DISKS



$m(3, 1, 3, 2)$ STATE



INSIDE
D FIRST CABLE
TO MOVE

9 B (2, 1, 2, 3) STATE

8 C (3, 1, 1, 2, 3) STATE

5 D (2, 2, 3, 1) STATE

INSIDE
A SECOND
CABLE TO
MOVE

3 B (1, 1, 3, 2) STATE

4 D (1, 3, 2, 1) STATE

10 B (1, 2, 1, 3) STATE

13 D (1, 1, 3, 2) STATE

INSIDE
A THIRD
CABLE TO
MOVE

4 A (1, 1, 3) STATE

7 A (3, 3, 2) STATE

11 A (1, 2, 2, 1) STATE

14 A (1, 1, 3) STATE

